

Corporate Parenting Panel

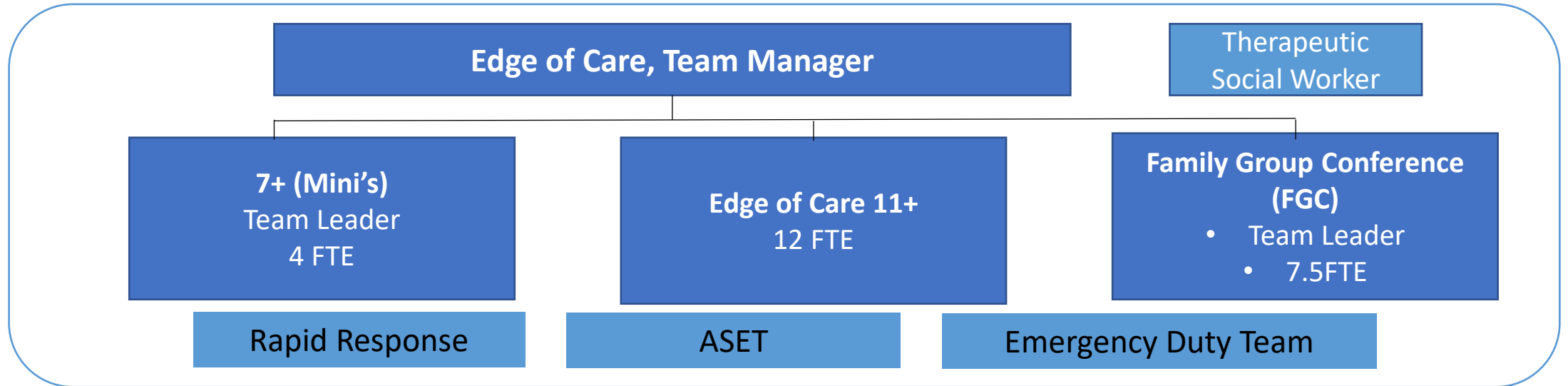
Supporting Solutions & Family Group Conferencing Annual Report

10/11/2023

Siobhan Davies – Strategic Manager, County Wide specialist Services

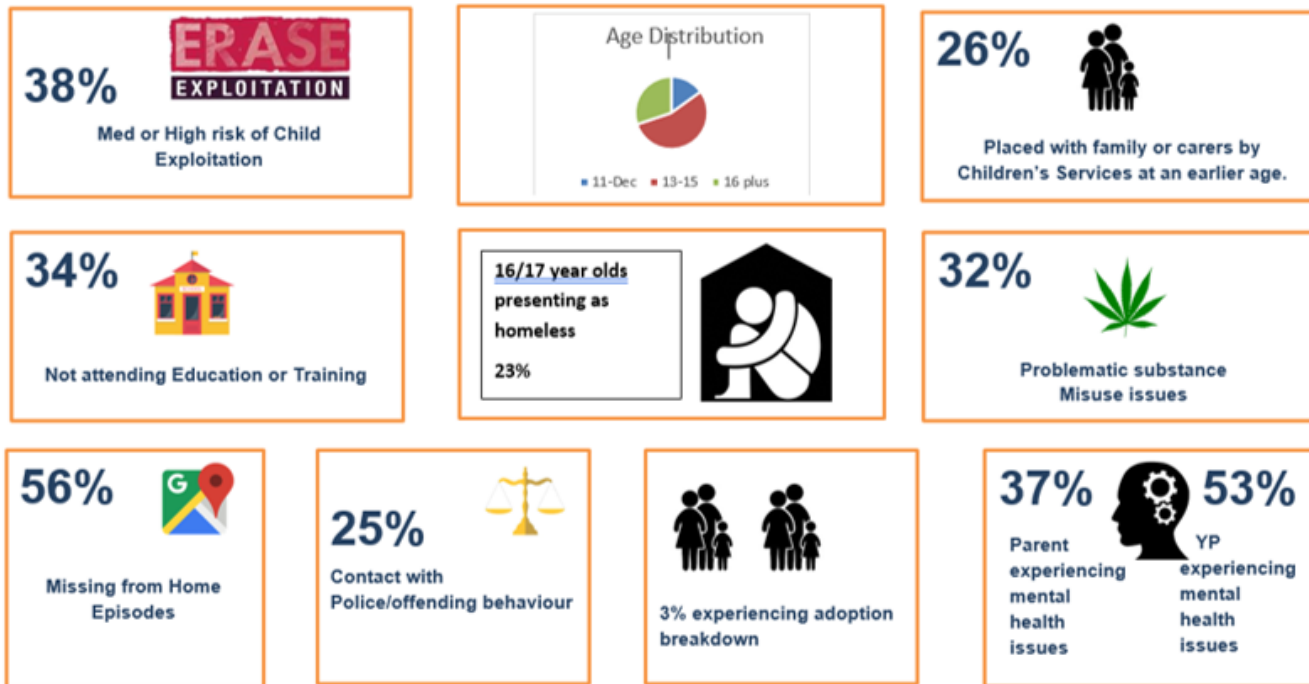


Supporting Solutions



- **Edge of care (EoC) support** – intensive interventions
- **Family Group Conference (FGC)** – support to families to identify and establish a sustainable plan to meet the needs of children and young people within their family unit.
- **Out of Hours support**

Factors which led to Young People being on the Edge of Care



There is a significant cross over in the number of Young People on the edge of care and;

- who are also at risk of exploitation and are missing from home
- Experiencing instability in education
- Experiencing issues with their mental health
- At risk of/or homeless

Rapid Response

Been admitted, or at risk of admission under the Mental Health Act.

ASET

Age14-17

extra-familial issues,

Complex mental health issues Homeless 16/17-year-olds

ERASE

exploitation and missing

Outcomes of children and young people supported 2022/23

7-11 Mini's

97%

Were supported
To stay at home
Or in their long term
placement

3%

Had to move to
A new placement
Or came into our care

12 - 17

83%

Were supported
To stay at home
Or in their long term
placement

11%

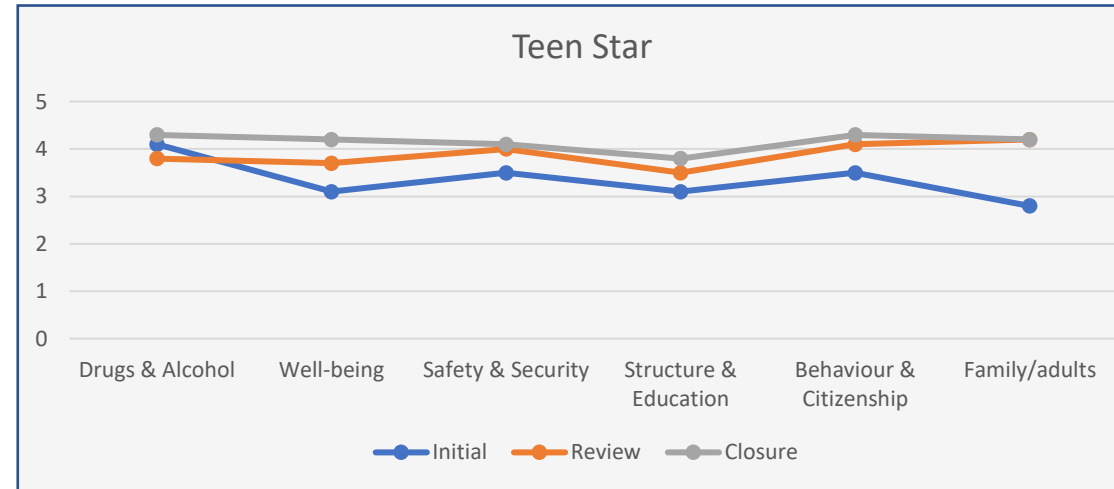
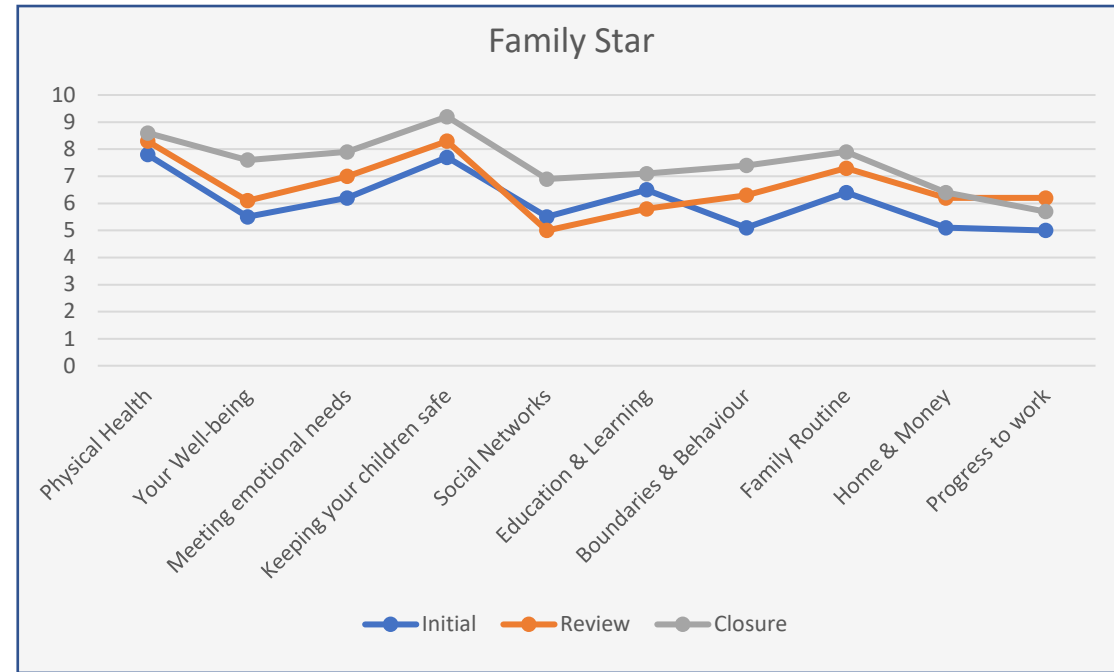
Came into our care
Or needed to move to
A new, long-term
placement

5.5%

Were supported To stay
in Supported To stay
with family As long as
possible Before
Supported
Accommodation

0.5%

Had to move to
A new placement
Due to relationship
breakdown



The Vision

The aim of the service is to work in a multi-agency context to prevent children on the edge of care coming into care

The Edge of Care service will bring together a range of accommodation options, services and outreach to support young people. It is our ambition to develop multi-agency input such as SALT and clinical psychology

The support will be for young people who are looked after or on the edge of care, at risk of family or placement breakdown, stepping down from residential care to family-based care or transitioning to independent living.

The Edge of Care Service will provide short-term interventions.

We are developing a bespoke Practice Model for the Edge of Care service. This will align with Signs of Safety and meet the Care Home regulations.